

The Chesapeake

6369 Murphy Dr.

The Chesapeake home is an open floor plan with an abundance of natural sunlight in the great room!

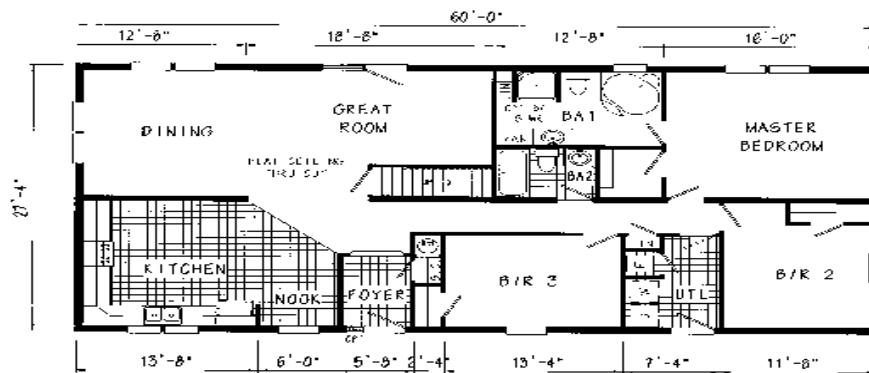
Exit your great room through the lovely French doors onto a patio for all your outside activities. Large eat-in kitchen with shaker oak cabinetry and the nook add a spice flavor to this modern kitchen. Full length attic with walk up stairs for extra storage space. Central air, and forced air heat. 20x24 garage. The front entrance has welcome all over it!

HOME INCLUDES:

- 20 x 24 Garage
- Central A/C Unit
- Attic
- Patio
- Large Corner Lot

APPROX. 1680 SQ. FT.

3 BR/2 Bath, Great Room & Large Kitchen



04504-AB2 2860 Approx. 1640 Sq. Ft.

FILE	DATE	NUMBER	BY	DATE	BY	DATE
LITERATURE						

